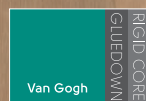
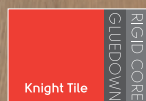




Karndean  
Designflooring

SEE FLOORING  
*differently*



Dual Format

The design you want in the format you need



*Looking for  
inspiration?*



Follow our boards on  
Pinterest: **Karndean\_ANZ**



Follow us on Instagram:  
**karndean\_ANZ**



Like us on Facebook:  
**karndeanANZ**

# Contents

Designed for comfort .....	4
Designed for peace of mind .....	5
The design you want in the format you need.....	6
Choose your format .....	7
Choose your design .....	8
 <b>Van Gogh</b>	
Enduring Australian style .....	10
Our source of inspiration.....	12
 <b>Knight Tile</b>	
Effortlessly stylish.....	28
Our source of inspiration.....	30
 <b>Resources and further information</b>	
Your flooring journey .....	50
Karndean Evolve™ .....	52



# From our home... to your home

**It all began in 1973 when a former flooring installer created a small business from his family home.**

With the belief that luxury vinyl flooring shouldn't just be practical, it needed to be beautiful as well, Karndean was formed. The team set out to travel the world, seeking inspiration from natural materials for what now are the most realistic luxury vinyl flooring products on the market.

The Karndean team worked out of that house for several years with the family's trusty dog Smokey, the Great Dane who is still present on Karndean's logo today. For the family and Karndean's early employees — many who are still working with us today — these years bring back many fond memories.

Now stretching across the globe, far beyond the walls of the original house, we continue to move forward with the same passion to deliver beautiful, innovative designs for your home.

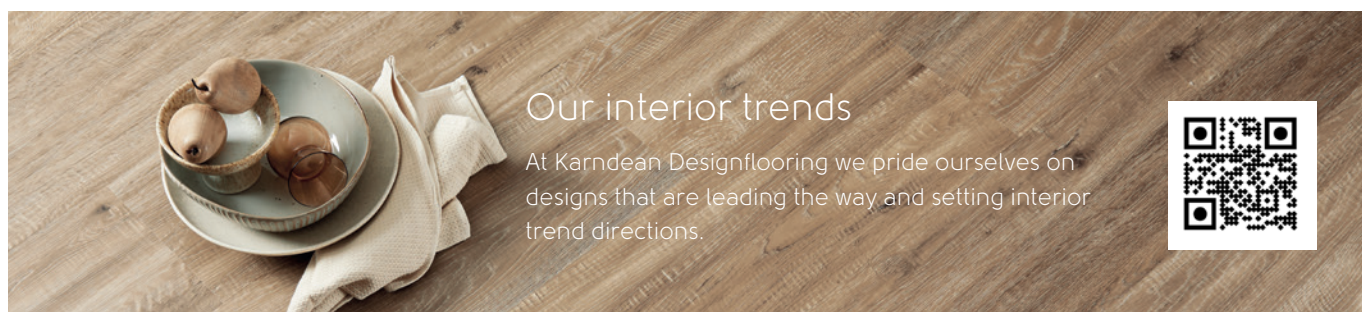


**Many elements must fit together, from furniture to flooring, to fixtures and everything in between. Where to begin?**

We begin a new design with inspiration, and we are most inspired by nature. What's your design motivation? Is it aesthetic, such as a cushion or the perfect paint chip? Or is it lifestyle, a place where you can dance in your pyjamas and your babies (both two and four-legged) can roll around and play?

No matter what drives you, Karndean Designflooring was created with your needs in mind. We see flooring differently and by combining original features with cutting edge design, you can create a simply beautiful floor that you will love for a lifetime.

Our simple method will help you navigate the selection process and design your perfect floor, taking you beyond picking a colour and measuring the room. Let's get started!



## Our interior trends

At Karndean Designflooring we pride ourselves on designs that are leading the way and setting interior trend directions.







## Designed for you

Every one of our floors is unique to us, having been lovingly created by our inhouse team. Our product designers select natural woods and stones to work with, taking the time to carefully replicate the knots, grains and textures found in these products into our designs. We apply different techniques of staining, brushing and oiling to name a few to create the perfect look and feel bringing you a simply beautiful floor.



## Designed to perform

Our floors are meticulously crafted for exceptional performance in diverse settings, prioritising durability, resilience, and practicality for residential and commercial use. Engineered to endure the rigours of daily life, our floors are water-resistant and offer superior surface protection against scratches and scuffs. They are also effortless to clean and maintain, maintaining their appearance with minimal upkeep. With a focus on quality and longevity, Karndean flooring surpasses expectations, delivering lasting beauty for a lifetime.



### Did you know?

Back in 1973, Smokey the Great Dane worked alongside the family and is still present on our logo today.







### Low maintenance

Easy to clean with a sweep and mop. Doesn't require sanding, varnishing or staining.



### Pet friendly

From muddy paw prints to household accidents and anything in-between, our low maintenance floors are designed with pets in mind.



### Kid friendly

Karndean floors offer kids a safe and comfortable space to play, and parents an easy-to-clean surface.



### Durable

Karndean Designflooring combines the authentic look and feel of natural materials with the added benefit of real-to-life embossing, delivering unmatched durability and the resilience of luxury vinyl.



### Design capabilities

The design flexibility of Karndean flooring allows you to create your own unique and personalised look in any space.

Designed for  
*comfort*





### Quiet underfoot

Karndean Designflooring offers formats that reduce noise transfer by up to 21dB – perfect for upstairs bedrooms, playrooms or attic/loft conversions.



### Laying possibilities

It's not just the floor you choose, but the direction you lay it that makes a lasting impression. From diagonal to herringbone, define your space with an intriguing laying pattern. Depending on the format you decide on.

Designed for  
*peace of mind*



### Phthalate free

We pride ourselves on environmental awareness in the manufacture and supply of all our products, and can proudly say that all Karndean products are phthalate free.



### Lifetime warranty

Not only is a Karndean floor unique to your home, but it's guaranteed to last for years to come.



# The design you want in the format you need

We offer our beautiful Van Gogh and Knight Tile designs in dual format.

As these are available in both gluedown or rigid core, you can enjoy the design you want, in the format you need.



## Gluedown

With our gluedown ranges you have complete control over the look of your floor, from the lay pattern to the incorporation of our design strips and borders.



Individually replaceable



Laying possibilities



No expansion gap required



Individual, glued down planks and tiles



## Rigid core

Our rigid core hybrid ranges feature a click-locking system that allows them to be installed over most existing hard floors, without the need for adhesive.



Click-locking mechanism



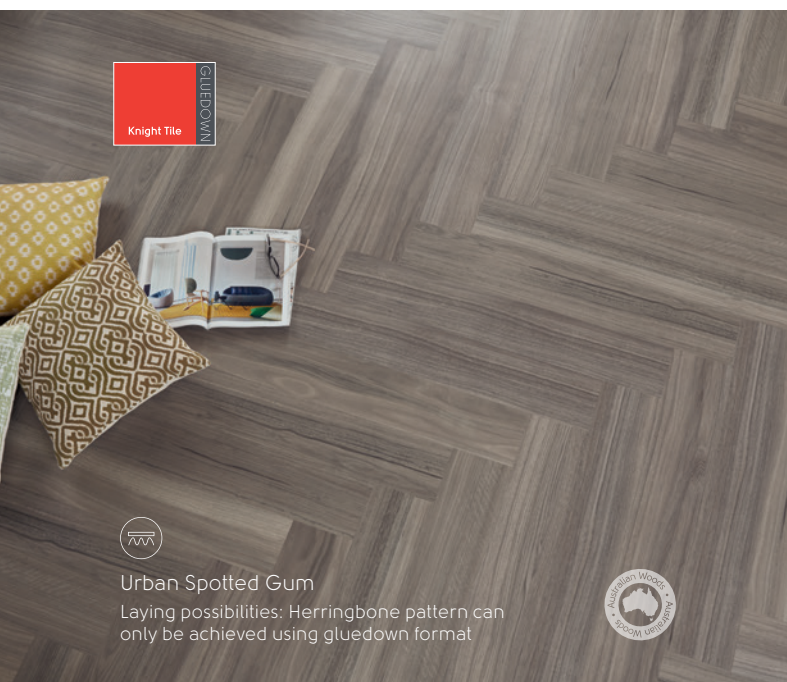
Reduces noise transfer



Quick and easy to install

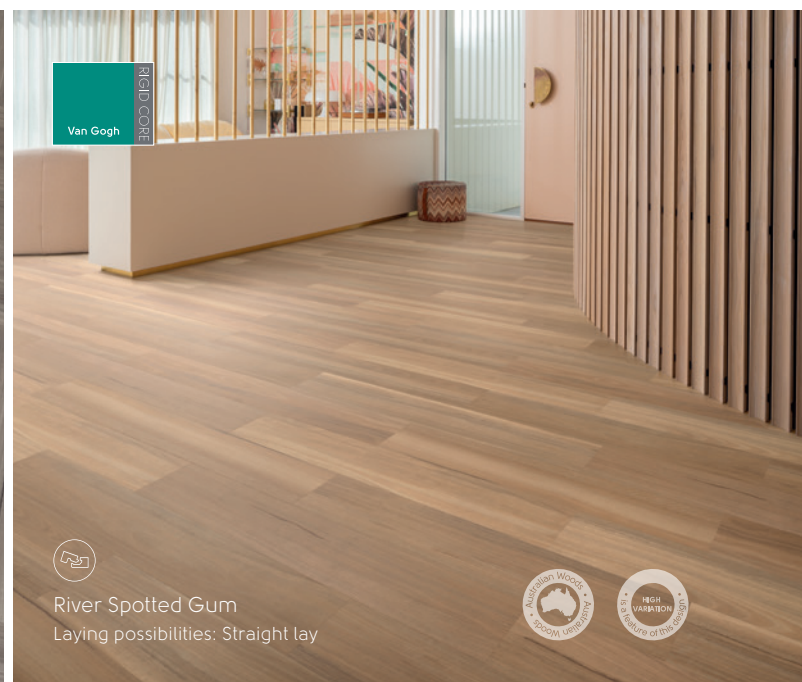


Installs over most existing hard floors



Urban Spotted Gum

Laying possibilities: Herringbone pattern can only be achieved using gluedown format



River Spotted Gum

Laying possibilities: Straight lay



# Choose your format

## Gluedown

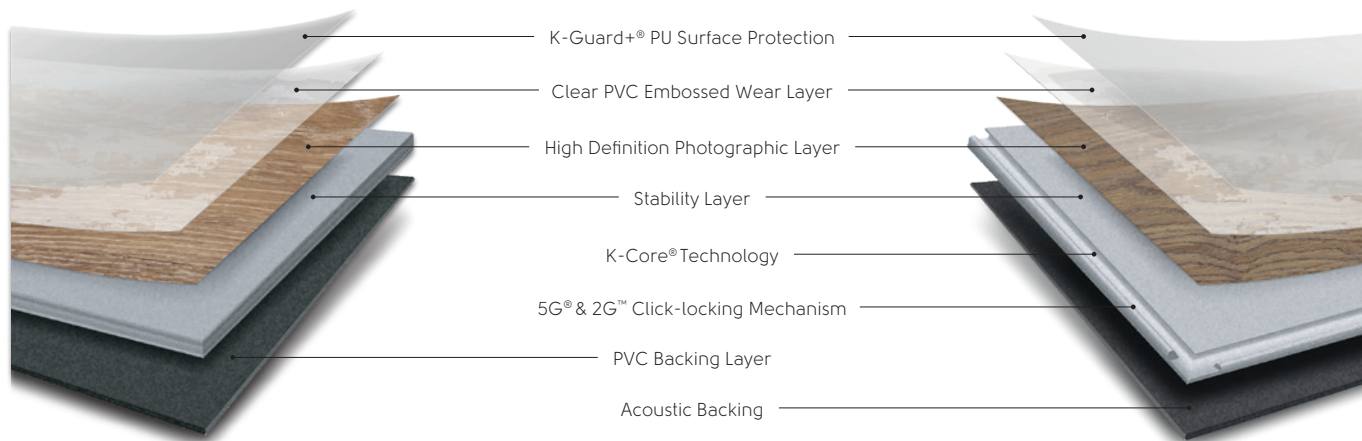
### Why choose a gluedown floor?

- **No expansion gap required:** Can be fitted hard up against walls and fixtures with no need for accessories to cover the gap.
- **Personalisation:** With our gluedown ranges, you have complete control over the look of your floor, from the lay pattern to the incorporation of our design strips and borders.
- **Glued down:** Planks and tiles are permanently secured with Mega Bond glue to the subfloor.

## Rigid core

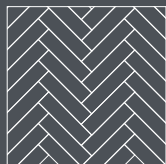
### Why choose a rigid core floor?

- **Installs over existing hard floors:** Rigid core can be installed over most existing hard floor coverings.
- **Acoustic qualities:** The premium, pre-attached acoustic foam backing reduces noise transfer to rooms below, making it perfect for upstairs bedrooms, playrooms or attic/loft conversions.
- **Quick and easy to install:** Click-locking systems allow the installer to quickly drop and lock planks together, meaning less upheaval and disruption to everyday life.

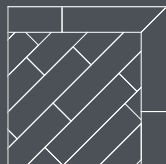


### Gluedown wood laying pattern ideas

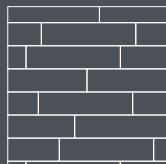
Herringbone



Diagonal with border

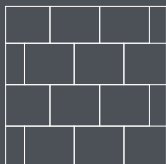


Staggered

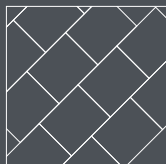


### Gluedown stone laying pattern ideas

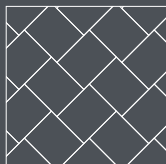
Brick lay



Diagonal

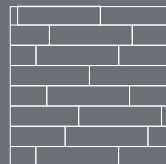


Herringbone

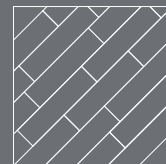


### Rigid core wood laying pattern ideas

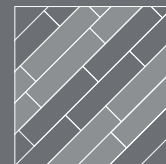
Staggered



Diagonal

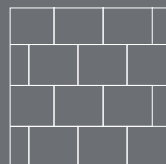


Striped (2-colour)



### Rigid core stone laying pattern ideas

Brick lay



Diagonal



Striped (2-colour)



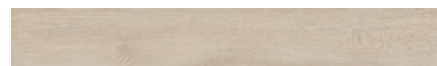
# Choose your design



## Van Gogh Wood

Our collection of Van Gogh woods captures the look and feel of real timber in a variety of colours and designs from traditional rustic to cool contemporary. The colour range in the Van Gogh collection offers a broad variety.

1219.2mm x 177.8mm | 1220.0mm x 180.0mm



■ Blush Oak  
VGW107T | SCB-VGW107T



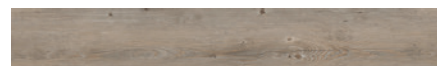
■ Light Distressed Oak  
VGW111T | SCB-VGW111T



■ Greige Oak  
VGW110T | SCB-VGW110T



■ Misty Grey Oak  
VGW112T | SCB-VGW112T



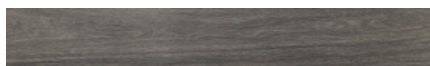
■ Country Oak  
VGW81T | SCB-VGW81T



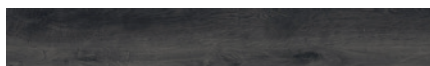
■ Distressed Oak  
VGW82T | SCB-VGW82T



■ Smoked Maple  
VGW128T | SCB-VGW128T



■ Nocturne  
VGW134T | SCB-VGW134T



■ Ebony  
VGW89T | SCB-VGW89T



■ Millstone Sycamore  
VGW133T | SCB-VGW133T



■ Tranquil Oak  
VGW135T | SCB-VGW135T



■ Birch  
VGW84T | SCB-VGW84T



■ Natural Maple  
VGW127T | SCB-VGW127T



■ Washed Blackbutt  
VGW129T | SCB-VGW129T



■ Eastern Blackbutt  
VGW130T | SCB-VGW130T



■ French Oak  
VGW85T | SCB-VGW85T



■ River Spotted Gum  
VGW131T\* | SCB-VGW131T\*



■ Northern Spotted Gum  
VGW103T\* | SCB-VGW103T\*



■ Classic Oak  
VGW86T | SCB-VGW86T



■ Marron Elm  
VGW132T | SCB-VGW132T

GLUEDOWN		Thickness: 3.0mm	Wear layer: 0.5mm	Bevel: Micro	Emboss: Yes	Box quantity: 3.252m <sup>2</sup> / 15 planks
RIGID CORE		Thickness: 5.5mm	Wear layer: 0.5mm	Bevel: Micro	Emboss: Yes	Box quantity: 2.196m <sup>2</sup> / 10 planks



Developed by Välinge Innovation AB, this patented technology is backed by the assurance of the HoldSafe® warranty. The registered trademarks, 5G® word mark and logo, belong to Välinge Innovation AB.

Enjoy all the advantages of a floating floor with the enhanced security of our superior vertical click-locking mechanism. The HoldSafe® warranty guarantees flooring joints will stay secure for a lifetime in residential homes, provided the planks and tiles are installed according to our guidelines and used as recommended.

## Installing rigid core LVT flooring

Karndean rigid core's 100% PVC 'score and snap' rigid core layer means installers are able to cut by hand without the need for expensive power tools resulting in quicker install with minimal home disruption and mess. It is essential that Karndean rigid core hybrid vinyl flooring is installed in accordance with these instructions as well as the applicable national standards and building codes for the installation of resilient flooring at the time of installation, to ensure a quality fit. Prior to installation, please check that this product is suited to the end-use application. Please scan to view the comprehensive installation instructions as well as information about expansion gaps, acclimatisation and plank/tile feathering.





## Knight Tile Wood

Every plank in the Knight Tile wood collection has been designed to reflect the authentic grain detail and intrinsic characteristics of natural timbers.

 1219.2mm x 177.8mm |  1220.0mm x 180.0mm



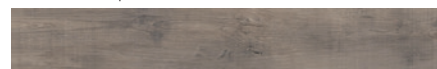
■ White Painted Oak  
KP105-7 | SCB-KP105



■ Grey Limed Oak  
KP138-7 | SCB-KP138



■ Lime Washed Oak  
KP99-7\* | SCB-KP99\*



■ Light Worn Oak  
KP104-7 | SCB-KP104



■ Urban Spotted Gum  
KP141-7 | SCB-KP141



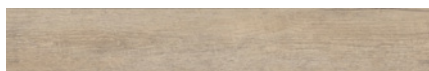
■ Shadow Studio Oak  
KP150-7 | SCB-KP150



■ Nordic Limed Oak  
KP153-7 | SCB-KP153



■ Coastal Blackbutt  
KP157-7 | SCB-KP157



■ Coastline Oak  
KP147-7 | SCB-KP147



■ Washed Character Oak  
KP144-7 | SCB-KP144



■ Blond Character Oak  
KP143-7 | SCB-KP143



■ Pale Limed Oak  
KP94-7\* | SCB-KP94\*



■ Rose Washed Oak  
KP95-7\* | SCB-KP95\*





■ Classic Spotted Gum  
KP149-7 | SCB-KP149



■ Traditional Character Oak  
KP146-7 | SCB-KP146



■ Mid Limed Oak  
KP96-7\* | SCB-KP96\*

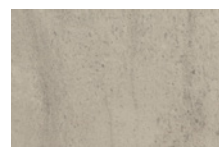
GLUEDOWN		Thickness: 2.0mm	Wear layer: 0.3mm	Bevel: No	Emboss: Yes	Box quantity: 4.335m <sup>2</sup> / 20 planks
RIGID CORE		Thickness: 4.5mm	Wear layer: 0.3mm	Bevel: No	Emboss: Yes	Box quantity: 3.074m <sup>2</sup> / 14 planks



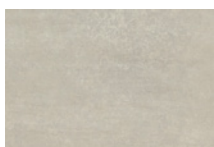
## Knight Tile Stone

The Knight Tile stone collection provides a choice of six on-trend flooring designs. Just like our wood collection, these beautiful tiles have been inspired by natural materials. These versatile choices feature a lightly textured surface that enhances their authentic appearance.

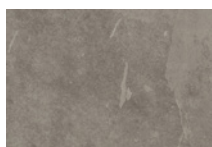
 304.8mm x 457.2mm |  304.8mm x 457.2mm



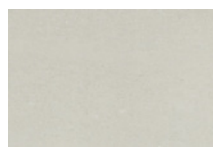
■ Honed Pebble Slate  
ST20 | SCB-ST20-18



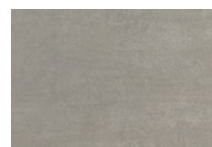
■ Dove Grey Concrete  
ST21 | SCB-ST21-18



■ Grey Riven Slate  
ST16 | SCB-ST16-18



■ Honed Oyster Slate  
ST17 | SCB-ST17-18



■ Smoked Concrete  
ST22 | SCB-ST22-18



■ Honed Charcoal Slate  
ST19 | SCB-ST19-18

GLUEDOWN		Thickness: 2.0mm	Wear layer: 0.3mm	Bevel: No	Emboss: Yes	Box quantity: 3.345m <sup>2</sup> / 24 tiles
RIGID CORE		Thickness: 4.5mm	Wear layer: 0.3mm	Bevel: No	Emboss: Yes	Box quantity: 2.787m <sup>2</sup> / 20 tiles

\*It's crucial to remember that 'high variation' is an intentional design element, adding visual intrigue to your floor by emulating the complexity of the natural world. While all our products exhibit variations (a premium feature that enhances the authenticity of Karndean products), our High Variation designs have been specifically identified by our Product Team for their exceptionally pronounced differences in shade, colour, texture, and pattern among individual planks. This sets them apart from other brands, which often provide more predictable and straightforward patterns.



# *Enduring Australian style*



Scan to read more  
about our dual formats



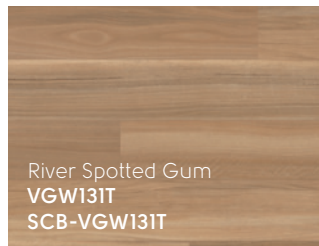


# *Our source of inspiration*

For decades, Karndean Designflooring has led the way in durable, luxury vinyl flooring. Our designers draw inspiration from the natural world, perfecting and curating our ranges so each one is as unique as you and your space. Innovative technology and quality materials ensure you own a beautiful floor true to the natural material that inspired it.

## Spotted Gum

The Spotted Gum tree flourishes in coastal areas along the eastern seaboard of Australia, ranging from the mountains of the Great Dividing Range to the sunshine coast of Queensland. Large amounts of sapwood can be seen within the boards and this adds to the blend of features that make the product so distinctive. Even when coloured, the sap creates a tonal plank that will work in all interiors.



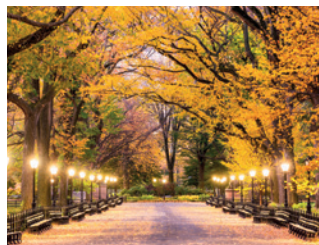
## Oak

These boards were hand selected as a trusted raw material and canvas to work with. The objective was to create an even, non-tonal visual across the floor, while retaining the much-loved characteristics of the natural, prime timber. The light speckling seen within the tight grains occurs due to the rapid dehydration of the boards once felled. We then hand applied coloured oils to produce on-trend colours.



## Elm

Elm trees are native primarily to north temperate areas and has been admired for centuries for their height and lush foliage. Elm wood has long been used in the construction of furniture, boats and buildings because of its natural durability. Known for its exquisite grain pattern and light to medium reddish-brown and sapwood, its grain is smooth and features a finely waved pattern.



## Maple

Widely distributed in the northern hemisphere and heavily concentrated in China. Maples are one of the most popular ornamental trees for planting along streets and in parks due to their unique beauty with many displaying striking autumn colour changes. In its natural form, Maple wood is attractively creamy and warm with a pinkish tinge. The timber is fine-textured and generally straight-grained appearance.



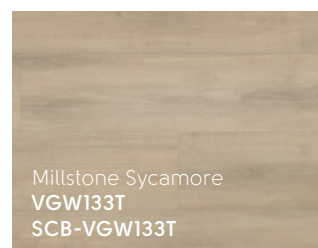
## Birch

Birch is right at home across the cooler parts of North America, Europe and Asia. Well known for their smooth, light grey-white bark which usually peels horizontally in thin sheets, especially on younger trees. Birch wood has good strength properties, is flexible and tough but not particularly hard, making the wood easy to work with. The natural wood has a yellow-white colouring and a gentle wavy grain.



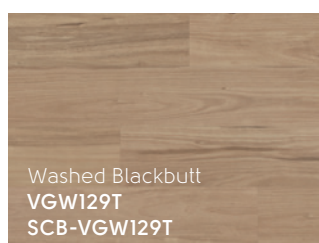
## Sycamore

European Sycamore belongs to the acer family, along with maple, and features many of the same characteristics. The most striking feature of the tree is the bark pattern comprised of warm-grey outer bark that peels off in large patches to reveal the wood within. The wood has a fine, close texture and in its natural form tends to be a light, almost white colour, making it an ideal colour carrier.



## Blackbutt

A quintessential Australian hardwood that takes its name from the lower half of the tree's trunk which is blackened by the fierce forest fires that both destroy, and then renew. These boards were sourced from the very north of New South Wales where thick forests merge with the beautiful coastline. Great care was taken to retain the oozing sap lines that add to the distinctive linear grain and bleed into the timber.







### Kid friendly

Karndean floors offer kids a safe and comfortable space to play.

Blush Oak **VGW107T** | SCB-VGW107T



Tranquil Oak **VGW135T** | SCB-VGW135T









Millstone Sycamore VGW133T | SCB-VGW133T





Birch VGW84T | SCB-VGW84T





Washed Blackbutt VGW129T | SCB-VGW129T





Eastern Blackbutt **VGW130T** | SCB-VGW130T





### Lifetime warranty

We're so confident in the quality of our floors, that we offer a lifetime warranty.

French Oak VGW85T | SCB-VGW85T





Natural Maple VGW127T | SCB-VGW127T





River Spotted Gum VGW131T | SCB-VGW131T







Country Oak VGW81T | SCB-VGW81T



Distressed Oak VGW82T | SCB-VGW82T





Northern Spotted Gum **VGW103T** | SCB-VGW103T







Misty Grey Oak VGW112T | SCB-VGW112T



Nocturne Oak VGW134T | SCB-VGW134T





### Water resistant

Spills happen, our water resistant floors stand up to spills of all sizes.



Classic Oak **VGW86T** | **SCB-VGW86T**



Marron Elm **VGW132T** | **SCB-VGW132T**









*Effortlessly stylish*



Scan to read more  
about our dual formats





# *Our source of inspiration*

For decades, Karndean Designflooring has led the way in durable, luxury vinyl flooring. Our designers draw inspiration from the natural world, perfecting and curating our ranges so each one is as unique as you and your space. Innovative technology and quality materials ensure you own a beautiful floor true to the natural material that inspired it.

## Spotted Gum

The Spotted Gum tree flourishes in coastal areas along the eastern seaboard of Australia, ranging from the mountains of the Great Dividing Range to the sunshine coast of Queensland. Large amounts of sapwood can be seen within the boards and this adds to the blend of features that make the product so distinctive. Even when coloured, the sap creates a tonal plank that will work in all interiors.



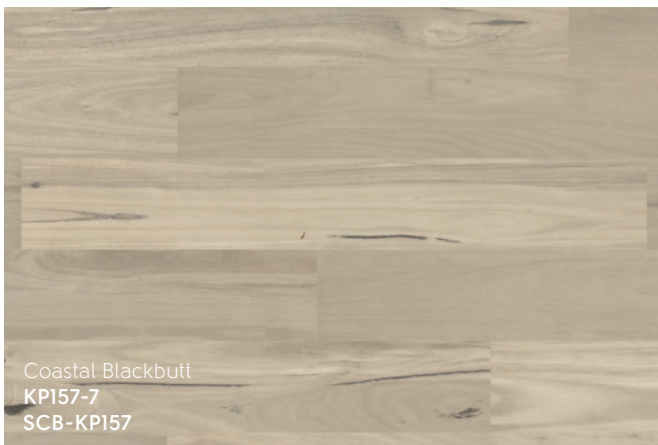
## Oak

These boards were hand selected as a trusted raw material and canvas to work with. The objective was to create an even, non-tonal visual across the floor, while retaining the much-loved characteristics of the natural, prime timber. The light speckling seen within the tight grains occurs due to the rapid dehydration of the boards once felled. We then hand applied coloured oils to produce on-trend colours to complement the existing range.



## Blackbutt

A quintessential Australian hardwood that takes its name from the lower half of the tree's trunk which is blackened by the fierce forest fires that both destroy, and then renew. These boards were sourced from the very north of New South Wales where thick forests merge with the beautiful coastline. Great care was taken to retain the oozing sap lines that add to the distinctive linear grain and bleed into the timber.



## Concrete

Our designers experimented with different colouring techniques to transform the classic, neutral design into an incredibly versatile, contemporary set of concrete look tiles. Each colour option highlights different features contained within the design, and the tonal shift within the individual tiles creates a visually appealing palette. The result is an attractive product that adds a new warmth and elegance to a solid industrial material.



## Slate

The design team visited quarries in the Lake District, England, and sourced volcanic slate by hand, selecting pieces of this 300-million-year-old stone. Each piece was individually unique in character, and the detail of the linear markings and fractured features of the stones pair well with an active family space.







White Painted Oak **KP105-7** | **SCB-KP105**



Nordic Limed Oak **KP153-7** | **SCB-KP153**





Coastal Blackbutt KPI57-7 | SCB-KPI57





Coastline Oak KP147-7 | SCB-KP147





Urban Spotted Gum KP141-7 | SCB-KP141



Grey Lined Oak KP138-7 | SCB-KP138





Blond Character Oak KP143-7 | SCB-KP143



Washed Character Oak KP144-7 | SCB-KP144













Classic Spotted Gum **KP149-7** | **SCB-KP149**





### Reduces noise transfer

Perfect for spaces where you want to reduce noise levels in the room below.



Traditional Character Oak **KPI46-7** | SCB-KPI46





Shadow Studio Oak KP150-7 | SCB-KP150





Scan to read  
about our **Lighten  
Up** trend.



Lime Washed Oak KP99-7 | SCB-KP99





Honed Oyster Slate **ST17** | **SCB-ST17-18**



Dove Grey Concrete **ST21** | **SCB-ST21-18**





Honed Pebble Slate ST20 | SCB-ST20-18





Honed Charcoal Slate **ST19** | **SCB-ST19-18**





Smoked Concrete ST22 | SCB-ST22-18





Grey River Slate ST16 | SCB-ST16-18



## *Our other ranges at a glance*

Our flooring collections bring the authentic beauty of natural wood and stone into your home, replicating the intricate details and unique characteristics found in natural materials. Every design is thoughtfully crafted to reflect the rich variation of colours, shades, and textures seen in nature. With a wide range of options, from soft, light tones to deep, dark hues, and enhanced with realistic embossing, you're sure to find the perfect style to transform your living space.



Scan to view our **Home Catalogue**  
for more information about our vinyl  
flooring ranges.



# Three vinyl flooring options *to suit your needs*

Choosing the perfect floor for your home can be a tough decision. That's why we offer our stunning, design-led flooring in three versatile formats: loose lay, rigid core hybrid, and gluedown. This way, you can enjoy the look you love with the installation method that best fits your needs. Speak with your installer or retailer to explore the options and find the ideal solution for your space.




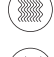

## Loose lay

**Reduce noise:** Ideal for loft conversions or upstairs rooms where soundproofing is important.

**Quick installation:** Perfect for fast, hassle-free installations.

**Flat subfloor:** Best for completely flat, dry subfloors prepared by a flooring professional.

**Maximum versatility and stability:** Suitable for most areas of use and does not require expansion gaps.

-  Individually replaceable
-  Quick and easy to install
-  Reduces noise transfer
-  K-Wave® friction grip backing
-  Laying possibilities







## Rigid core

**Superior acoustics:** Excellent for upstairs rooms, reducing noise between floors.

**Quick installation:** Fast to install, even over most existing floors like tiles or floorboards.

**Uneven subfloors:** Versatile installation over most subfloor types, hiding minor imperfections

**High durability:** Perfect for high-traffic areas and homes with kids or pets.

-  Click-locking mechanism
-  Reduces noise transfer
-  Quick and easy to install
-  Installs over most existing hard floors







## Gluedown

**Bespoke creations:** Mix wood and stone designs for a unique look.

**Flat subfloor:** Best for completely flat, dry subfloors prepared by a flooring professional.

**Maximum durability:** Suitable for high traffic areas.

**Longevity:** Provides long-term durability and resistance to wear.

-  Individually replaceable
-  No expansion gap required
-  Individual, glued down planks and tiles
-  Laying possibilities

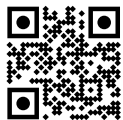




# Your flooring journey

## Connect with local retailers

Embark on your Karndean Designflooring journey in your neighbourhood at a trusted Karndean retail partner. Our extensive network of independent retail partners are committed to helping you choose a floor that exudes enduring beauty and suits your specific sites subfloor and project requirements. Find your nearest Karndean Designflooring stockist through our easy-to-use online search feature.



**Simply visit [www.karndean.com/far](http://www.karndean.com/far) to embark on the next step of transforming your space.**



## Explore our design showroom

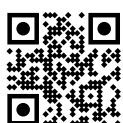


Discover a world of design possibilities at our conveniently located Melbourne headquarters, just off the Eastlink & Monash freeways. Immerse yourself in over 500m<sup>2</sup> of inspiration showcasing the latest in our product range.

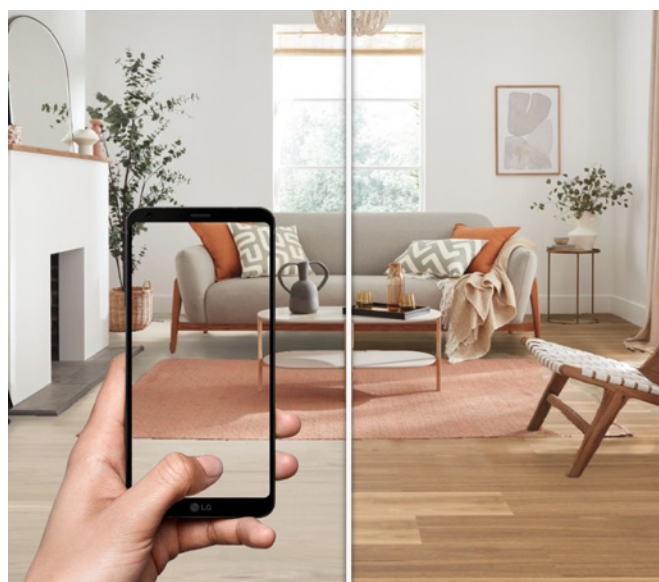
**For our opening hours, please visit [www.karndean.com/showroom](http://www.karndean.com/showroom).**

## Design at home

Bring your design ideas to life with Floorstyle. See your future floor with our interactive room viewer, Floorstyle. If you see a design you like, try it from the comfort of your own couch. Upload a picture of your room and get creative. Explore your options by changing your laying pattern and colours.



**Visit [www.karndean.com/floorstyle](http://www.karndean.com/floorstyle) to visualise your floor.**



## Free flooring swatches

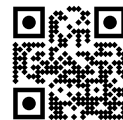
Order up to six free sample swatches, delivered free straight to your door, to help narrow down your choices. These samples are particularly helpful especially if you're looking to create a moodboard of ideas to get started.

**Visit [www.karndean.com/samples](http://www.karndean.com/samples) to order your samples.**





## Maintain your Karndean floor with ease



Take pride in your investment. We make maintenance a breeze, advocating for pH-neutral detergents and reducing the need for harsh chemicals and excessive water. Your Karndean floor is an investment worth cherishing, offering both beauty and practicality, and with our straightforward flooring maintenance steps, you can ensure its effortless.

Visit [www.karndean.com/cleaning](http://www.karndean.com/cleaning) to find out more.

## Lifetime warranty

Complement your living space with the timeless appeal of Karndean Designflooring, backed by our exceptional lifetime warranty. Our commitment to providing top tier quality, style, and durability is unparalleled. When you choose Karndean, you're choosing flooring that stands the test of time.



Visit [www.karndean.com/warranty](http://www.karndean.com/warranty) to find out more.

Explore our lifetime warranty and learn more.



## Keep in touch

Follow us on social media. Share your new floors and reviews with us; we look forward to hearing from you.



Like us on Facebook **karndeananz**



Follow us on Instagram **karndean\_anz**



Join us on LinkedIn **Karndean Designflooring ANZ**



Follow our boards on Pinterest **Karndean\_anz**

For areas with high foot traffic or prone to getting wet, consider conducting independent 'in situ' slip resistance testing to verify the ongoing suitability of the flooring for these environments. Only products specifically noted as being suitable for wet areas should be used in those conditions.

To maximise the longevity of anti-slip surfaces on your Karndean floor, it is essential to follow the recommended cleaning and maintenance practices. Improper cleaning and maintenance can lead to a degradation of slip resistance, increasing the risk of slips and falls.



# *It's a new day*

And we're ready to create  
**a better tomorrow!**

It's a continuing journey, and there are no shortcuts.  
Now is the time for everyone to begin taking bigger steps.  
Ours is a promise to think differently, act decisively, and  
create real change.

**It's a promise to Evolve.**

Five decades ago, our family-owned business was founded  
on innovation, bold action and a pioneering spirit. Fifty years  
later, those same ideals guide us forward. Because the  
future demands change.

**It's time to create a better tomorrow.**



Discover  
Karndean  
Evolve™





## Confront climate change

Karndean's products prioritise sustainability through remarkable longevity, with a guaranteed service life of 35 years for domestic use. This extended durability has a significant positive environmental impact over time, promoting an eco-friendlier future.



## Supply chain transparency

Third-party certifications for environmental and social responsibility, including fair treatment and safe conditions for workers. Karndean's factories prioritise recycled materials and recyclability, to ecofriendly product packaging, setting the benchmark for environmental responsibility. Certified manufacturing adhere to ISO 14001 and ISO 9001 standards.



## Inclusion & diversity

We prioritise equity, inclusivity, and diversity, fostering them through engagement and education. In our workplace, we celebrate everyone's contributions as responsible corporate citizens. These values influence our environmental policies, responsible sourcing/trading, and contributions to communities. Our founder's principles still shape our commitment to responsible operations.



## Sustainable use of resources

Karndean prioritise the use of recycled materials in their products, with all of them incorporating up to 50% recycled PVC in their backing layers, sourced from post-production waste. We validate our contribution to reducing landfill and promoting recycling.



## Health & wellbeing

Karndean's products prioritise wellbeing, surpassing mere aesthetics. Free from harmful substances like heavy metals and unsafe phthalates, they're certified for indoor air quality post-installation. Our dedication to healthy interiors extends to using water-based or solvent-free adhesives, minimising VOC emissions. Your health and comfort are central to Karndean's philosophy.



## Education

We educate employees about the importance of sustainability, helping them understand what role they play and devise new ways of working. By conducting CPD classes and speaking engagements with organisations like the Green Building Council of Australia, we actively contribute to the training of professionals in the design and construction.





#### Imagery and Design Reproduction

Photography and print cannot always produce a perfect representation of our products. This includes colour, pattern variation and installation elements used. For this reason we strongly recommend obtaining a product sample and where possible viewing a larger sample in-store. We also recommend visiting our website for information on installation, after care and product selection. We love developing new ideas and improving on our existing designs which means that sometimes products are withdrawn at short notice. We hate to disappoint and will work with you to find an alternative design. Please contact Customer Service for more information. It is recommended that when selecting flooring products, you verify compliance with building regulations and certification practices relevant to your local area. All Karndean range and format credentials are at our certification policy level – please check for the current certification status

#### Contact us

Phone: AUS - 1800 331 170\*

Email: [customerservice@karndean.com.au](mailto:customerservice@karndean.com.au)

Web: [www.karndean.com](http://www.karndean.com)

Address: 835 Stud Road Knoxfield,  
Victoria 3180, Australia

\*Calls may be recorded for training and quality purposes.



**Karndean**  
Designflooring

